

a:control Format Plugin



Allen Coding GmbH
Friedrich-Bergius-Ring 30
97076 Würzburg
Germany

Phone: +49 (0) 931-25076-0
FAX: +49 (0) 931 25076-50

E-Mail: support@allencoding.com
Web: www.allencoding.com

Table of contents

1. SYSTEM REQUIREMENTS	3
2. TIMING SPECIFICATION TRANSFER SPEEDS WITH AVAILABLE FORMATS	4
3. INSTALLATION	5
4. XML-TEMPLATE	7
5. DATABASE CONNECTION	9
6. TROUBLESHOOTING	12

Note:

All screenshots and pictures of the application which are shown in this document are to be taken as examples and are subjected to the copyright of Allen Coding GmbH.

1. System requirements

PC-Hardware	Requirements
Installed a:control	CPU min. 1.0 GHz processor speed
Network	Ethernet
RS232 / COM Ports	COM-Port for scanner (optional)
Scanner	Installed scanner with COM-Port (optional)
USB- Ports	USB A for data exchange with stick drive
Software	Windows 7 SP1 Windows XP embedded (Service Pack 3) Windows 10 Microsoft .NET Framework 4.0

It's absolutely possible that the software is running without problems on differing system constellations. The performance of the application will possibly slow down with older hardware. Most important for a faultless application execution is enough free working memory and hard disk space.

NGT System

Printer-Hardware	Requirements
Printer model	NG2, NG2+, NG4, NG4+, NG6, NG6E, NG8, NG8E
Firmware	Current printer firmware
Connectivity	Ethernet / Serial

53 System

Printer-Hardware	Requirements
Printer model	53XL40, 53XL80u, 53XLC, XL5000, XL5000C
Firmware	Current printer firmware
Connectivity	Ethernet / Serial

MLi System

Printer-Hardware	Requirements
Printer model	MLi
Firmware	Current printer firmware
Connectivity	Ethernet / Serial

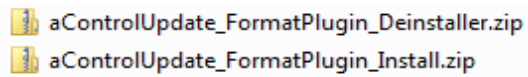
2. Timing Specification

Transfer speeds with available formats

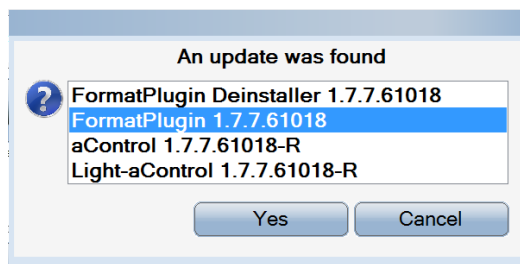
Printer Type	Variable count	Format upload	Printer count	Transfer speed Minuten PC Intel I7, 2.9GHz, 10 Threads (Minutes)	Transfer speed a:touch, 10 Threads (Minutes)
XLU	0	nein	1	0:15	0:20
XLU	0	nein	8	0:21	0:28
XLU	1	nein	1	0:17	0:21
XLU	1	nein	8	0:28	0:37
XLU	2	nein	1	0:18	0:22
XLU	2	nein	8	0:30	0:38
XLU	2	Ja	8	1:41	1:51

3. Installation

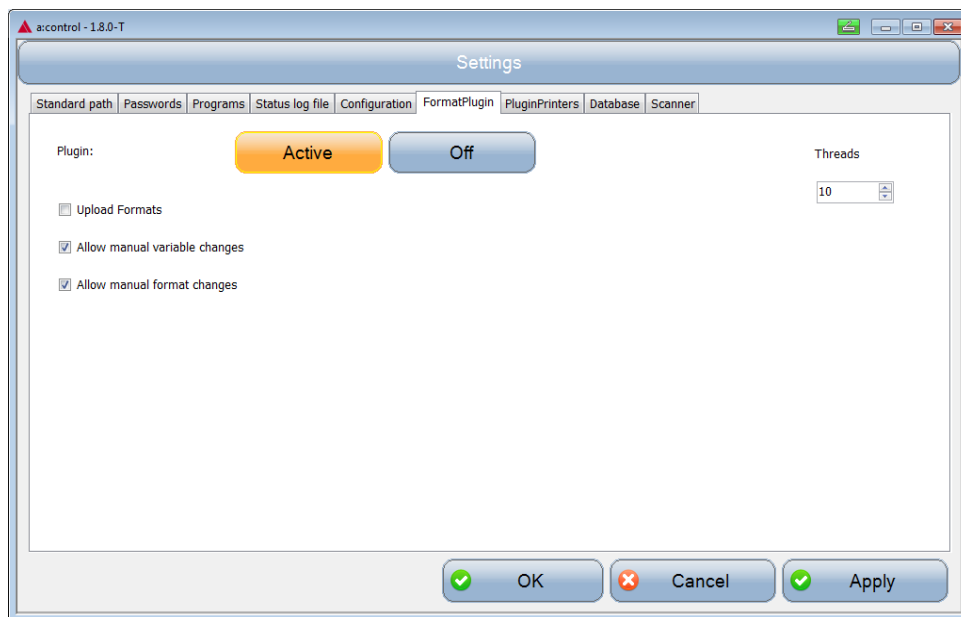
- Copy both installer files (*.zip) to a stick drive and start the a:control Software.



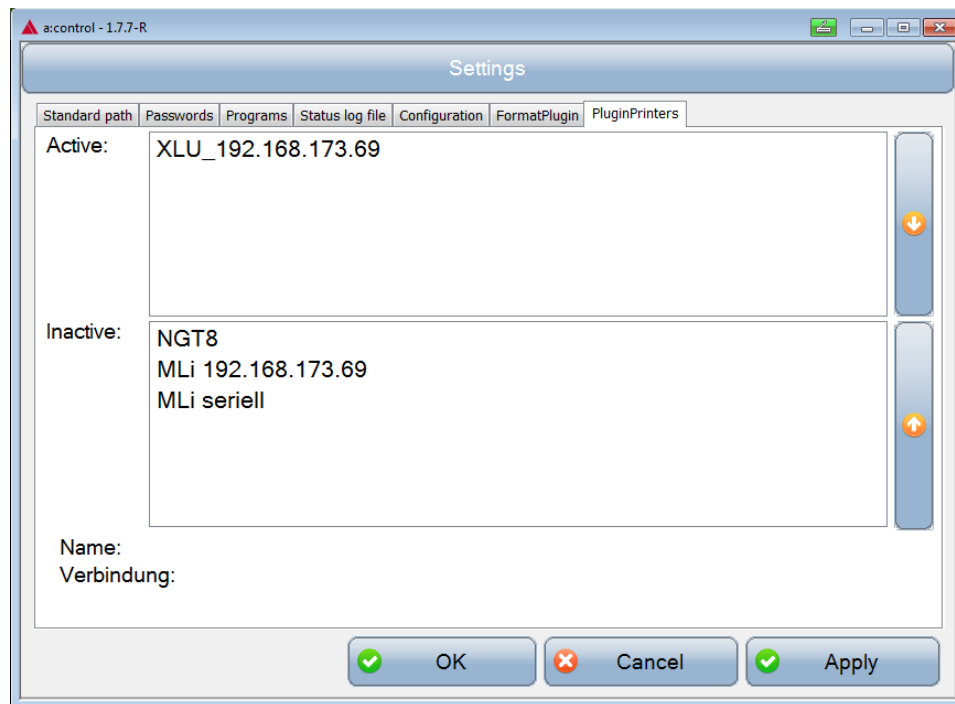
- a:control will display a message for installation/de-installation of the plugin:



- In the program settings you can make the necessary settings for the plugin.
- You can disable the checkboxes format or variable changes.
- You can use "Threads" to specify how many printers can be operated at the same time. A speed advantage is dependent on the processor.
- When the "Upload Formats" check box is activated, the print format is sent to the printer every time, regardless of whether it already exists



- To send a print format to certain printers, use the arrow buttons to set the desired printer to "Active".

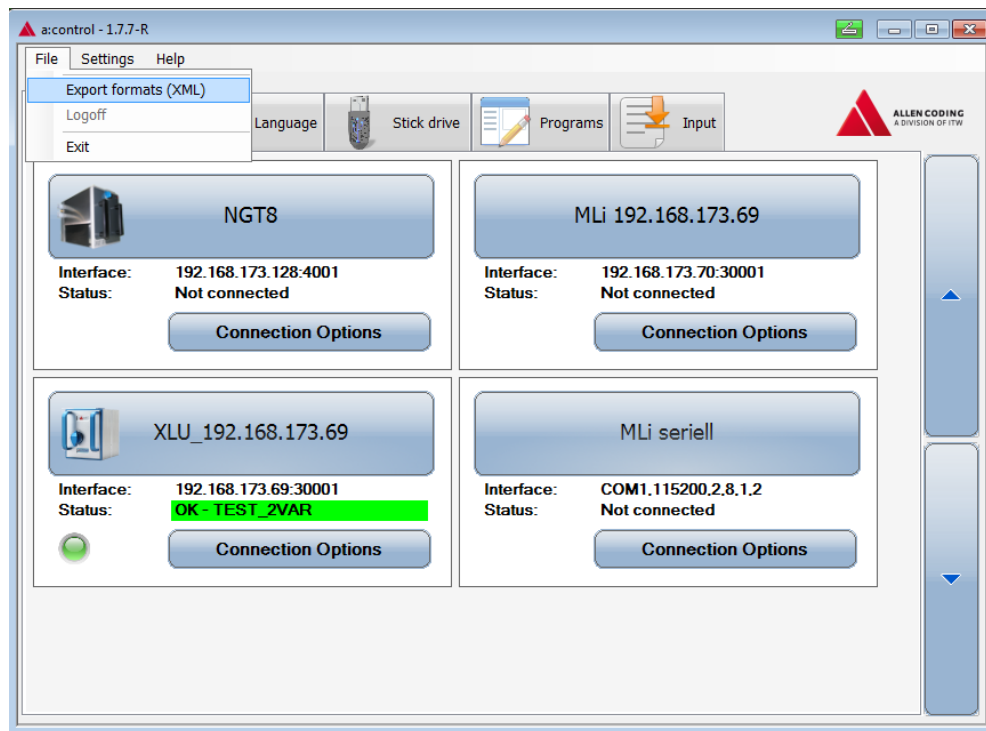


4. XML-Template

Creating of a XML template:

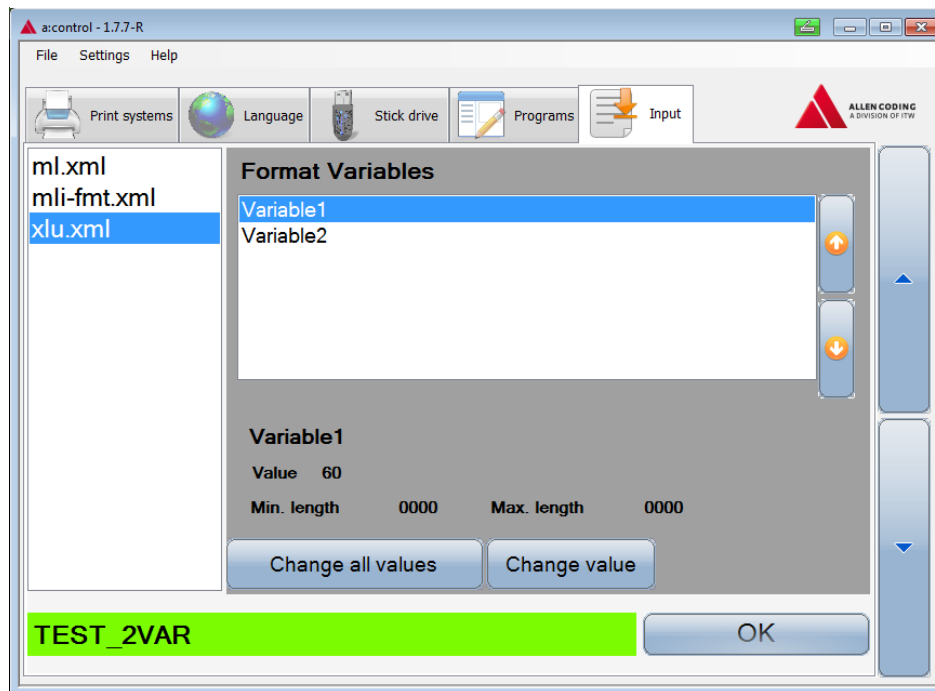
Connect to a printer and load a format, e.g. a format with variables. Once the format is loaded, the XML can be generated from the file menu.

Click on "Export formats (XML)":



Load format to multiple printers


This action creates an XML file that you can copy to the format folder. You can now load this XML format on all defined printers one at a time. You can change the variable contents before transferring to the defined printers in the form. Always press "OK" to continue.

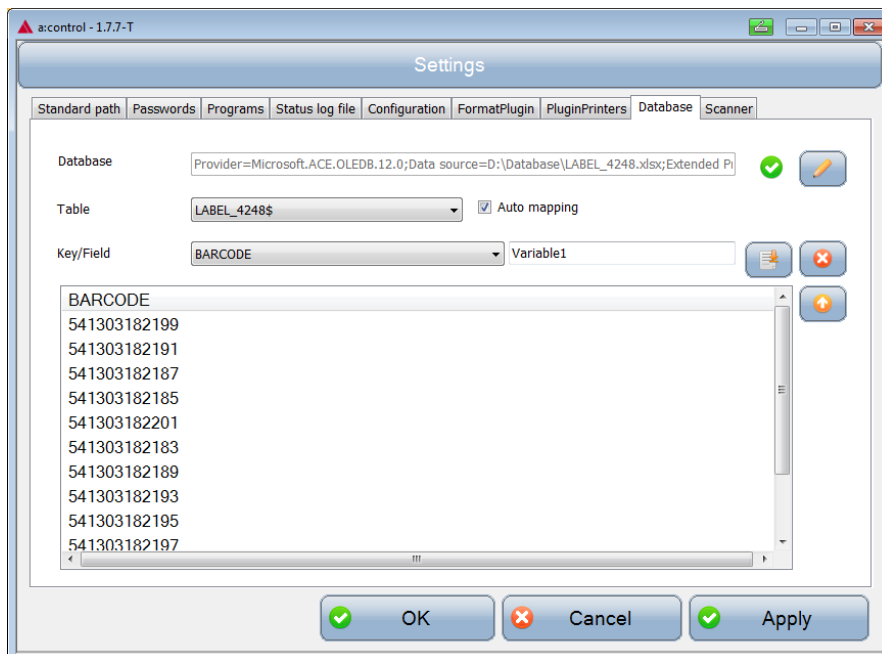


5. Database connection


The plugin can also be used to read variables from a database, which are then transferred to the masks. In the settings of the plugin go to the tab „Database“. You can set a connection string to the database here. You can obtain the corresponding connection strings from your administrator.

Installation:

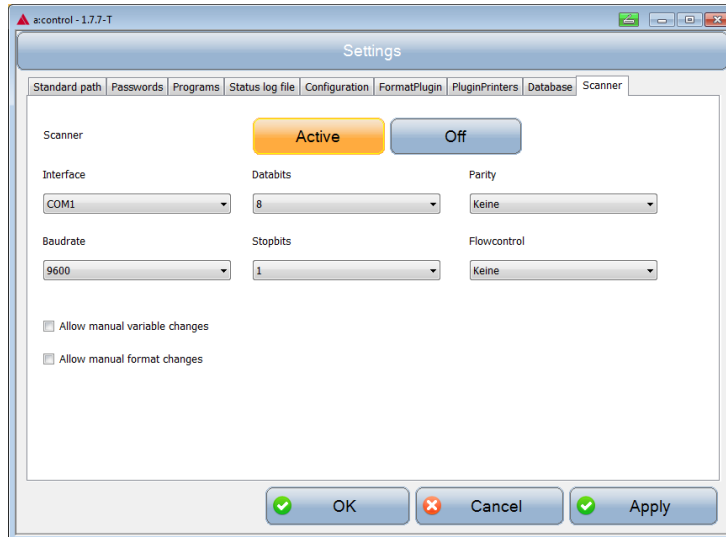
- 1) Create the connection string. If the connection is established,  will be displayed.
- 2) Select Table. If the field names in the table match the variable names in the label, "Automapping" can be selected and the key / field assignment does not have to be carried out manually. Otherwise, enter all mappings on the database fields manually:
- 3)



(Mapping of database field „BARCODE“ to format variable „Variable1“)

- 4) Select the key / field that corresponds to the labelname. Then press  to mark the field as label name. A „#LABELNAME“ mapping must be present, as this allows the label to be automatically selected by an installed scanner when scanning a barcode. For this purpose, a scanner with a serial interface (for example Datalogic Powerscan D8330) must be installed.
- 5) Select the field to be the key field of the database. The selected key / field is the column of the database whose contents correspond to the name of the XML files. (see example)

- 6) Now set up the scanner. You can define here whether manual corrections to variable contents are allowed, or whether formats can be selected manually.



(Scanner activated and no manual changes possible)

Example:

Key/Field: LABEL #LABELNAME

LABEL

MPK035

MPB035

MPB037

MPB037

MPK035

Key/Field: SAPCODE

SAPCODE

416859

416650

416604

416589


416872

416569

E11L04291

416740

PD8330-E11L04291



E11L04291

accontrol - 1.7.7-T

File Settings Help

Print systems Language Stick drive Programs Input

ml.xml

MPB035.xml

MPB037.xml

Format Variables

Variable1

Variable2

Variable1

Value 541303182189

Min. length 0000 Max. length 0000

Change all values Change value

TEST_2VAR

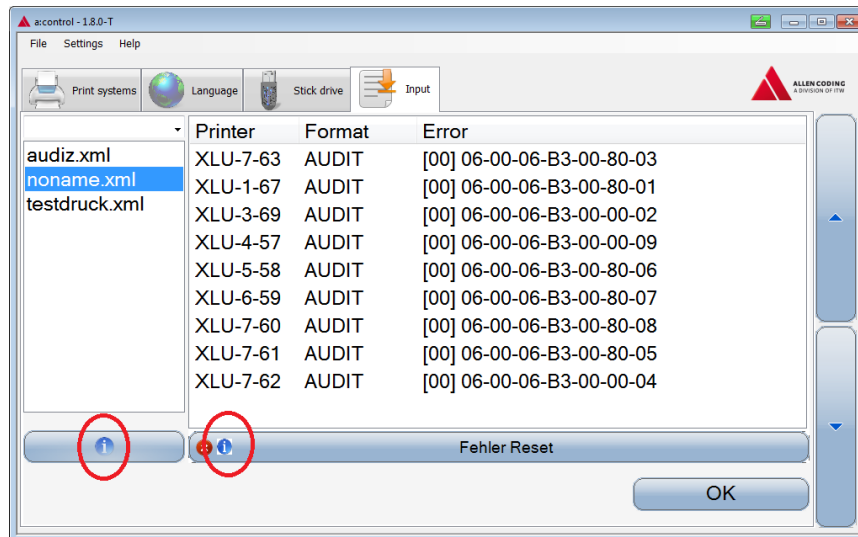
OK

The file "MPB037.xml" is selected by scanning the barcode E11L04291 and the Variables from the database. A 2-time scan of the same barcode starts the transfer to the printer.

In the background, an XML is sent by the file parser to the selected printers.

6. Troubleshooting

If multiple printers are addressed via TCP / IP, make sure that the printer's MAC IDs are unique.
You can display the MAC IDs of the printers with the info buttons:

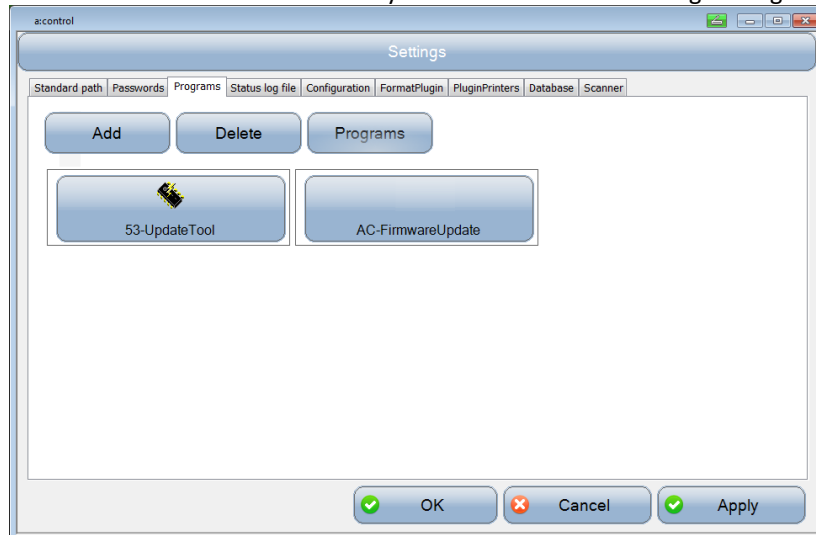


6. Troubleshooting Change MAC_ID

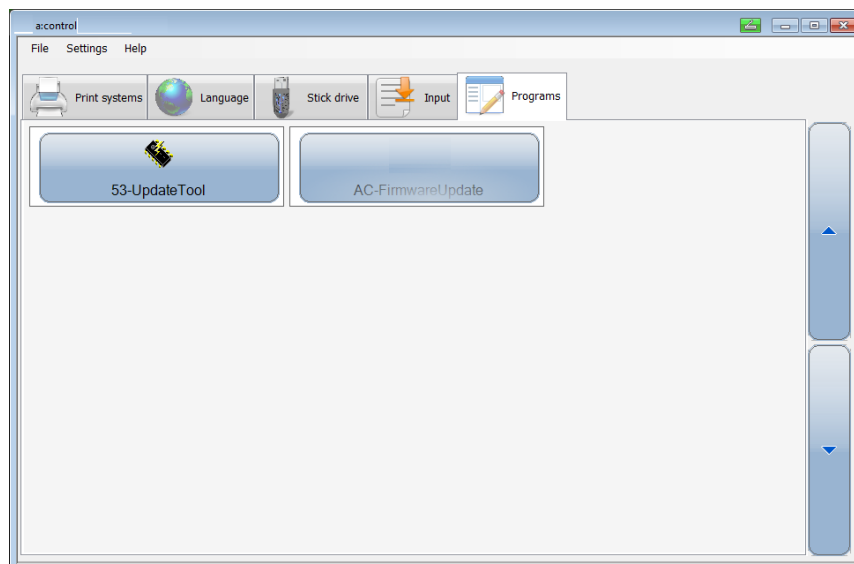
Changing the MAC id for XLU printers if necessary:

Changing the MAC-ID is possible with the AC-FirmwareUpdate tool.

You can install the latest version if you add the tool with Settings->Programs->Programs->Apply.



Afterwards the firmware update tool is available in the “Programs” tab



Connect the XLU printer with a serial connection to your PC. Open the tool, set printer type to XLU and change the MAC-ID in the Network settings menu and Start the update.

