

a:control Installation notes



Allen Coding GmbH
Friedrich-Bergius-Ring 30
97076 Würzburg
Germany

Phone: +49 (0) 931-25076-0
FAX: +49 (0) 931 25076-50

E-Mail: support@allencoding.com
Web: www.allencoding.com

Installation notes

a:control



Table of contents

1. SYSTEM REQUIREMENTS	3
2. INSTALLATION	4
• Installation on a PC:	4
• Installation on an ac touch-PC (a:touch™)	6
3. PASSWORD ADMINISTRATION	8
4. ADD NEW PRINTERS	8

Note:

All screenshots and pictures of the application which are shown in this document are to be taken as examples and are subjected to the copyright of Allen Coding GmbH.

1. System requirements

PC-Hardware	Requirements
Prozessor	1.0GHz or higher
RAM	min. 2 GB (Recommended: 4 GB)
HDD	150 MB available in the hard disk + space for formats
Mouse, Keyboard, Monitor or Touch-Screen	Monitor resolution min. 800x600, 16 bit color
Networkcard	Ethernet
RS232 / COM Ports	One COM-port for each serial connected printer
USB- Ports	USB A for data exchange via USB-device
Software	Windows 10 Microsoft .NET Framework 4.6

It's absolutely possible that the software is running without problems on differing system constellations. The performance of the application will possibly slow down with older hardware. Most important for a faultless application execution is enough free working memory and hard disk space.

Printer-Hardware	Requirements
Printer model	NGT-Series: NGT2, NGT2+, NGT4, NGT4+, NGT6, NGT6E, NGT8, NGT8E 53LT/XL-Series: 53LTi, 53LTc, 53XL80, 53XL40, 53XL80u, 53XLC, 25XLi, XL5000, XL5000C MLi-Series: MLi
Firmware	NGT-Series: Current printer firmware >= Version N.5.x 53LT/XL-Series: Current printer firmware >= Version 1.22 Depending on the firmware version not all application functions will be supported
Connectivity	Serial, Ethernet or USB (53XL only)

2. Installation

- **Installation on a PC:**

Run the setup and follow the instructions of the setup-wizard.
Standard path for the application:

„C:\Programs\Diagraph\Control“ or
„C:\Programs (x86)\Diagraph\Control“

Installation under Windows7:

Windows7 is using a User Account Control (UAC) as standard. This enables each user to have its own configuration. In order to this the files, which are created by a:control, will be physically stored in the following folder:

C:\Users\<USERNAME>\AppData\Local\VirtualStore\Program Files (x86)\Diagraph\Control

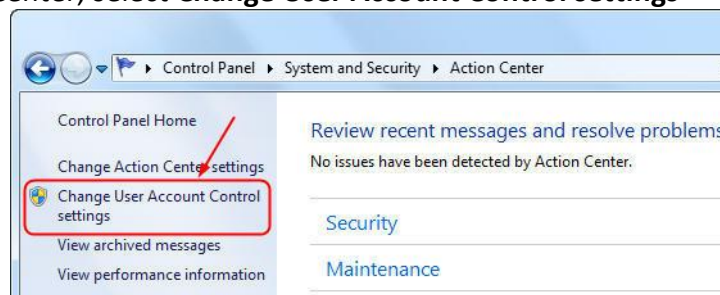
Please delete this folder whenever you reinstall a:control for a clean installation.

Alternative:

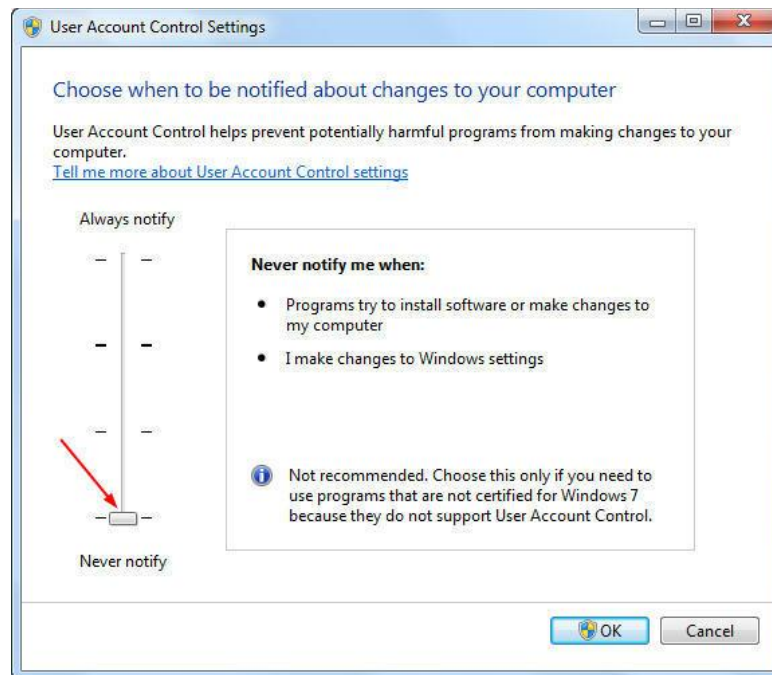
If you not want to use the UAC and its advantages you can turn it off as described as following.

First of all, you need administrator level access to turn off the UAC in Windows 7.

1. Open **Start Menu → Control Panel**.
2. Select **System and Security → Action Center**.
3. In the Action Center, select **Change User Account Control settings**



4. A new window will open. In this window, drag the slider down to the bottom towards **Never notify** as shown in the picture and click **OK**.



5. Restart your computer.

- **Installation on an ac touch-PC (a:touch™)**

Copy the installation file (*.msi) on to an USB-device. Connect the USB-device to the touch-PC. It is also helpful to connect an USB- keyboard and/or mouse to the touch-PC for the installation.

To install the software, you must disable the partition filter of the operation system. Otherwise, all changes are discarded at the next startup.

Disable filter under the following path:	Start->Applications->C Filter off
Check filter status under the following path:	Start->Applications->C Filter Status (line 4 : State DISABLED)

Install the software under the following path:
D:\Program Files\Diagraph\AControl

After completion of the software setup the filter must be re-activated to prevent damage to the operating system.

Enable the filter under the following path:	Start->Applications->C Filter on
Restart the operating system	
Check filter status under the following path:	Start->Applications->C Filter Status (line 4 : State ENABLED)

NOTE: The operation of the system without activated filter, leads to loss of warranty!

After the installation you will find a shortcut on the desktop. Copy this shortcut to the auto start folder if a:control should boot up together with the operating system.

Network settings for connecting two print systems directly with the a:touch

You can connect two print systems directly to the a:touch without integration into a network by using two network cables. For this a Network Bridge is needed.

For this go to the windows user interface and select „Start-> Settings -> Network connections“

Set each of the network cards to a fix IP-Address. Default 192.168.173.51 and 192.168.173.52, in each case using the network mask 255.255.255.0

Select both network cards at the same time and create a Network Bridge by clicking on the right mouse button. Set the network bridge to an IP address (e.g. 192.168.173.53) also using the network mask 255.255.255.0.

At a:control select this connection for your network card.

- **Starting a:control with command line parameters**

The a:control main program can be started and configured by using special command line parameters:

Example:

```
acontrol.exe /bootlogo=acf /maximized=no /top=n /ipconfig=yes /width=1024 /height=600  
/touch=y
```

The command line parameters are as follows:

```
/light -> start in light mode  
/touch={yes|no} -> start in touch screen mode  
/maximized={yes|no} -> start in maximized fullscreen mode  
/datapath={path to application data}  
/datapathcommon={path to common application data}  
/signxml={yes|no} -> sign logfile  
/bootlogo={ACF|<filepath to png>}  
/width={width of screen}  
/height={height of screen}  
/iview=<printername> -> iview mode for printer  
/ipconfig={no} -> no ip configuration available  
/quiet -> no bootlogo  
/systray -> start as service  
/diagraph -> companylogo diagraph  
/norwood -> companylogo norwood  
/showtaskbar={yes|no} -> do not hide windows taskbar in touch mode  
/linuxport={ttyAMA|ttyS|ttySerial..} -> specify linux port for serial connection  
/wifi={yes|no} -> enable wifi configuration  
/ip={IP} -> connect to printer ip on startup  
/xdotool=y -> use xdotool for keyboard events
```


3. Password administration

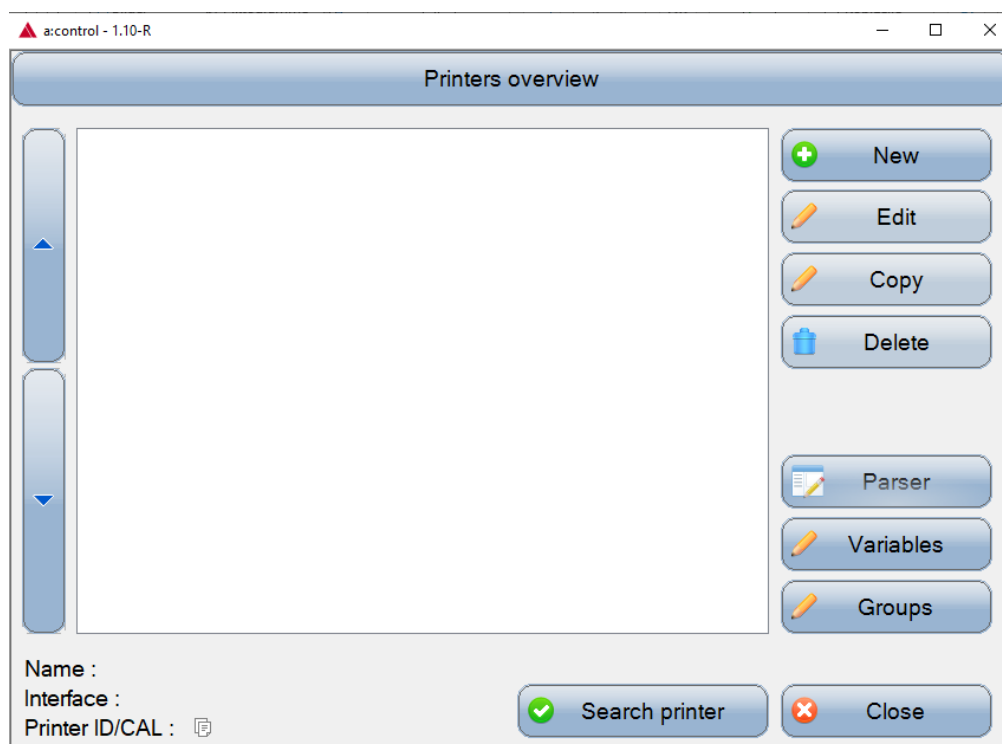
In default mode the application is locked with passwords.
The preset users and passwords are:

admin:admin
service:service
setter:setter
user:user

You can change this under Settings -> Program Settings -> Password or disable the password prompt under Settings -> Program Settings -> Configuration.
You can find more information about the password administration in the a:control help file.

4. Add new printers

If you start up a:control and there are no printers added the following window will appear:



Add your printer by using the button „New“. If the printer is reachable over the local network you can easily find and apply it with “Search printer”.

▲ a:control - 1.10-R

Printer add/Change value

Printer description

Printer


Network connection Serial connection Printer type Configuration



DHCP IP Port

☐ 127.0.0.1 4001

Port Forwarding Port

172.18.112.81



 Search printer


 OK  Cancel

▲ a:control - 1.10-R




Search printer (NGT Series)

Available printers

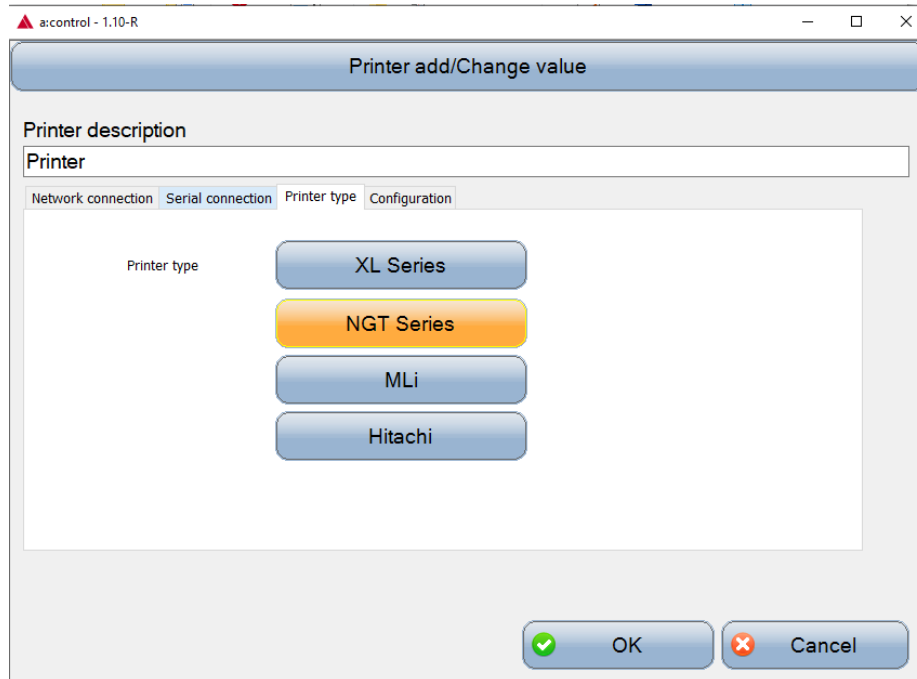
 192.168.173.130
 192.168.173.127

 Search printer

Find by MACID

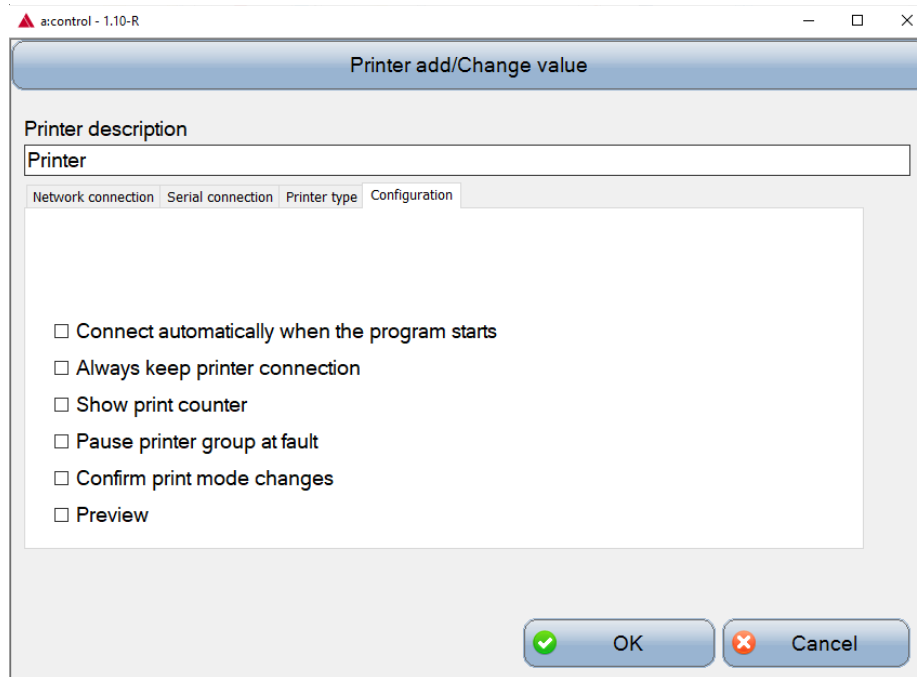
 Edit  Apply  Cancel

In the next step you have to select the printer series for your new printer:



You can also apply the printer afterwards over Settings -> Printer settings.

In the configuration section you can define the behavior:



Attention:

This tab is only available if you switch on the **advanced mode** in the program settings. To do this, switch to the program settings

