

a:control Serialization Plugin



Allen Coding GmbH
Friedrich-Bergius-Ring 30
97076 Würzburg
Germany

Phone: +49 (0) 931-25076-0
FAX: +49 (0) 931 25076-50

E-Mail: support@allencoding.com
Web: www.allencoding.com

Table of Contents

1. SYSTEM REQUIREMENTS	3
2. INSTALLATION	4
3. SETTINGS	5
4. EXAMPLE APPLICATION WITH MULTIPLE LINES:	6

Disclaimer:

All screenshots and images (screenshots) of the application in this document are to be regarded as exemplary surfaces and are subject to the copyright of Allen Coding GmbH.

1. Systemrequirements



PC-Hardware	Requirements
Prozessor	1.0GHz or higher
RAM	min. 2 GB (Recommended: 4 GB)
HDD	150 MB available in the hard disk + space for formats
Mouse, Keyboard, Monitor or Touch-Screen	Monitor resolution min. 800x600, 16 bit color
Networkcard	Ethernet
RS232 / COM Ports	One COM-port for each serial connected printer
USB- Ports	USB A for data exchange via USB-device
Software	Windows 10 Microsoft .NET Framework 4.6

It's absolutely possible that the software is running without problems on differing system constellations. The performance of the application will possibly slow down with older hardware. Most important for a faultless application execution is enough free working memory and hard disk space.

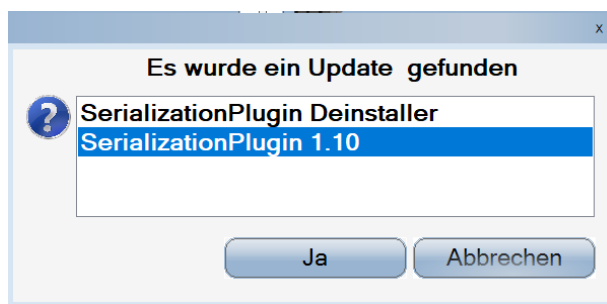
Printer-Hardware	Requirements
Printer model	NGT-Series: NGT2, NGT2+, NGT4, NGT4+, NGT6, NGT6E, NGT8, NGT8E
Firmware	NGT-Series: Current printer firmware >= Version N.8.6
Connectivity	Serial, Ethernet

2. Installation

- Copy the two installer (*.zip) files onto a USB stick and then start the a: control software.

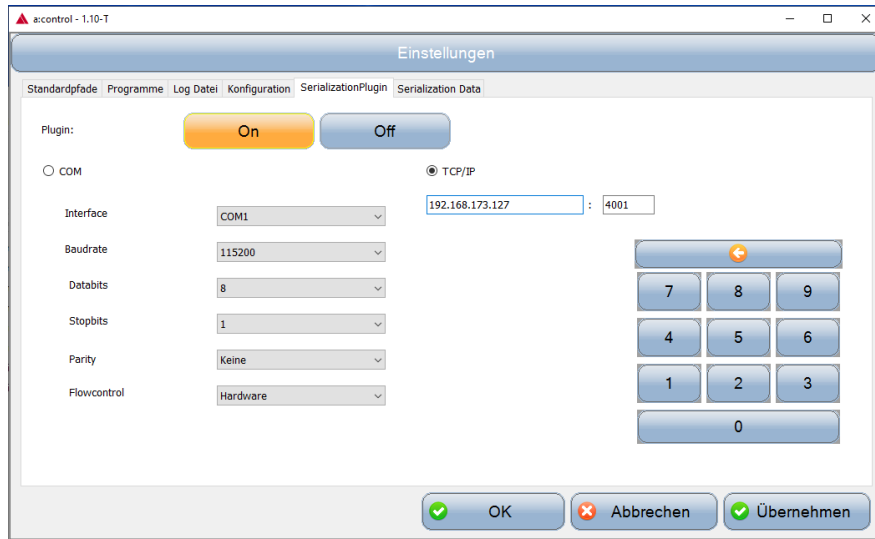
 aControlUpdate_SerializationPlugin_Deinstaller.zip
 aControlUpdate_SerializationPlugin_1.10.zip

- a:control recognizes the files on the USB stick and offers an installation.



3. Settings

In the program settings you can make the necessary settings for the plugin. (Menu -> Settings -> Program Settings)



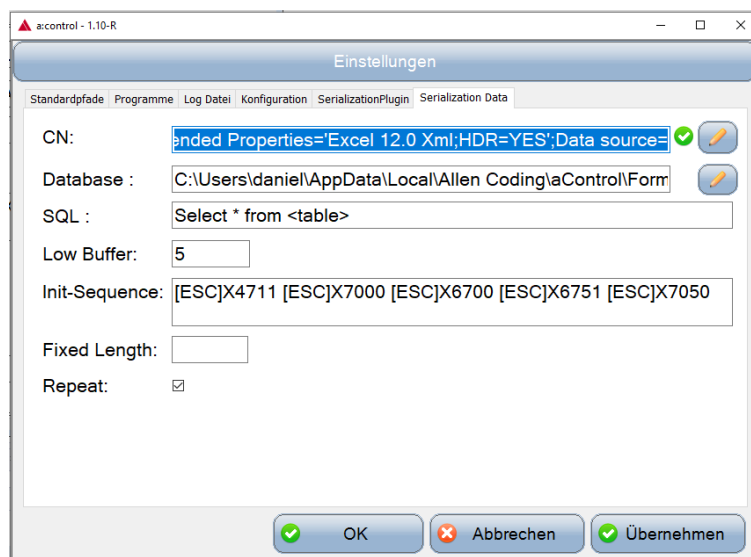
For processing an Excel database, the connection string should be as follows:

Provider=Microsoft.ACE.OLEDB.12.0;Extended Properties='Excel 12.0 Xml;HDR=YES';Data source=

A table with month names serves as an example, the path of which is entered in the "Database" line:

C:\Users\%username%\AppData\Local\Allen Coding\Control\Formats\Data.xlsx

If the "Fixed length" parameter is set, the data can be centered in the printout. The read database value is padded to the specified length at the back and front with spaces. For processing an Excel database, the connection string should be as follows:

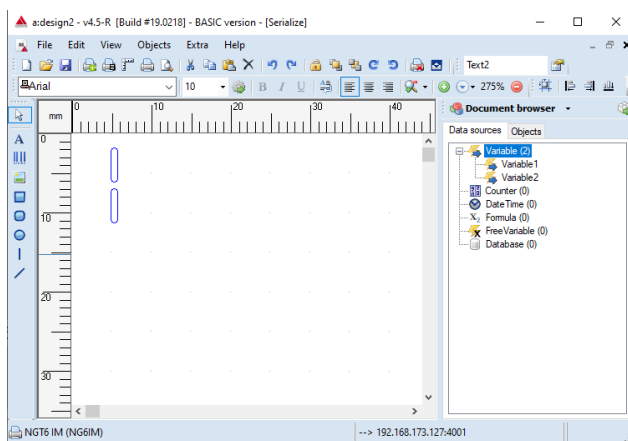


4. Example application with multiple lines:

A register is to be printed in which the last line appears in multiple lines:



Create a print image with 2 variables and save it under the name "Serialize"



The Excel database "Data.xlsx" is structured as follows:

	A	B
1	Variable1	Variable2
2	A	
3	B	
4	C	
5	D	
6	E	
7	F	
8	G	
9	HI	
10	JK	
11	L	
12	M	
13	N	
14	O	
15	PQ	
16	R	
17	S	
18	T	
19	UV	
20	W	
21	X	YZ