

a:control
Sidesteps



Allen Coding GmbH
Friedrich-Bergius-Ring 30
97076 Würzburg
Germany

Phone: +49 (0) 931-25076-0
FAX: +49 (0) 931 25076-50

E-Mail: support@allencoding.com
Web: www.allencoding.com

Table of contents

1. SYSTEMREQUIREMENTS	3
2. SIDESTEP FUNCTIONALITY	4
HOW TO ENABLE THE SIDESTEP FUNCTIONALITY IN THE PRINTER (A:CONTROL SOFTWARE):	4
3. DEFINE PRINT FORMAT	5

Note:

All screenshots and pictures of the application which are shown in this document are to be taken as examples and are subjected to the copyright of Allen Coding GmbH.

1. Systemrequirements

PC-Hardware	Requirements
Software	a:control installation up from 1.5.12-R a:design installation up from 3.1.8-R

It's absolutely possible that the software is running without problems on differing system constellations. The performance of the application will possibly slow down with older hardware. Most important for a faultless application execution is enough free working memory and hard disk space.

NG Systems:

Printer-Hardware	Requirements
Printer model	NGT2, NGT2+, NGT4, NGT4+, NGT6, NGT6E, NGT8, NGT8E
Firmware	Printer firmware versions up from: TTNG: N7.3.02-R MES: MES005.0-R
Connectivity	Serial or Ethernet Network

2. Sidestep functionality

Sidestep functionality can help to save ribbon for specific print formats. The prerequisite for this is that several regions in an image are declared. The printer prints at each trigger one of the defined region before a ribbon advance occurs.

How to Enable the sidestep functionality in the printer (a:control software):

1. Open **Printer -> Management -> Sidesteps**



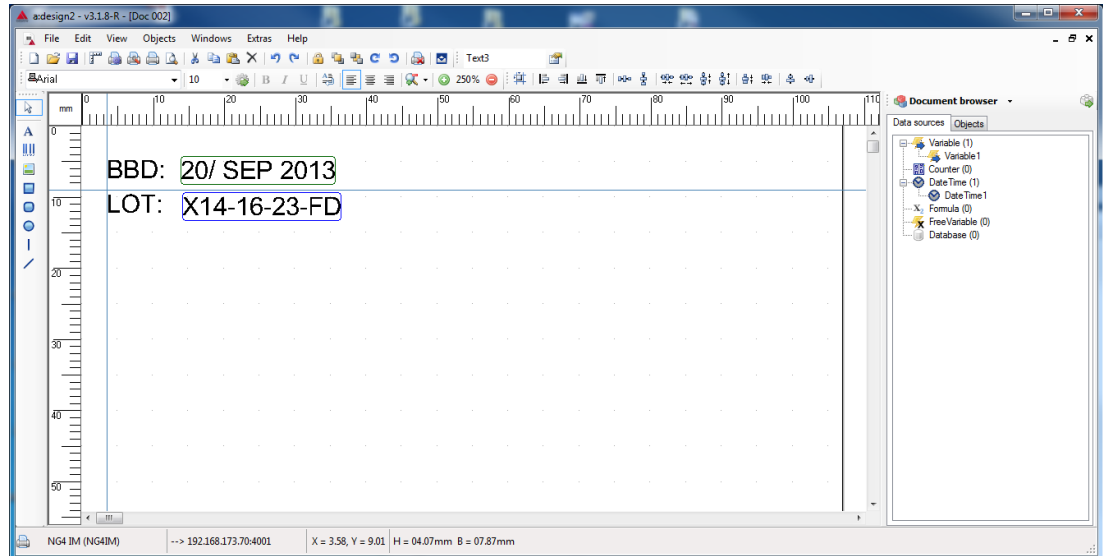
2. Select **Active** and apply



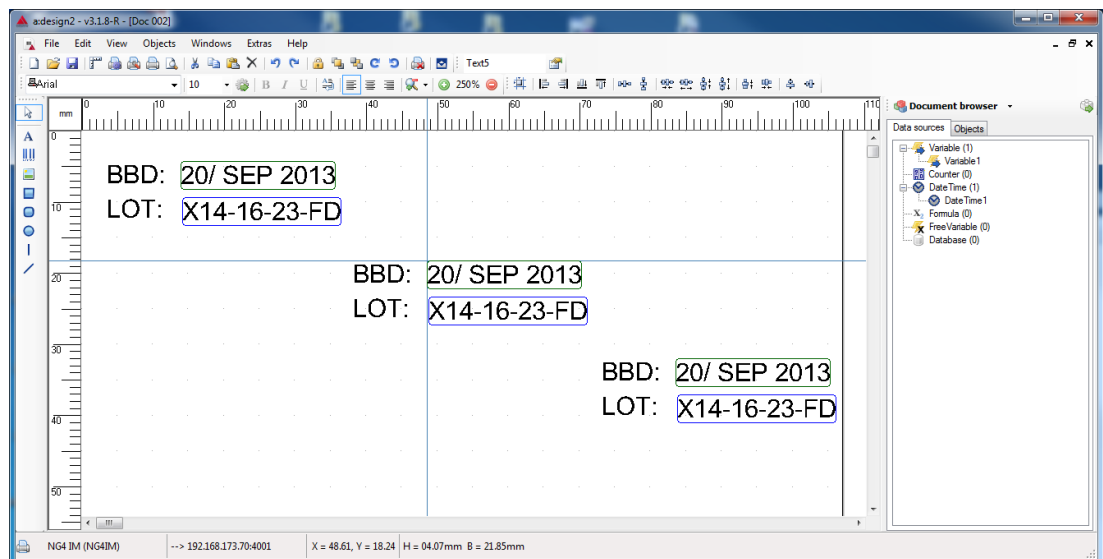
3. Define print format

Setup a print format with defined regions (a:design software)

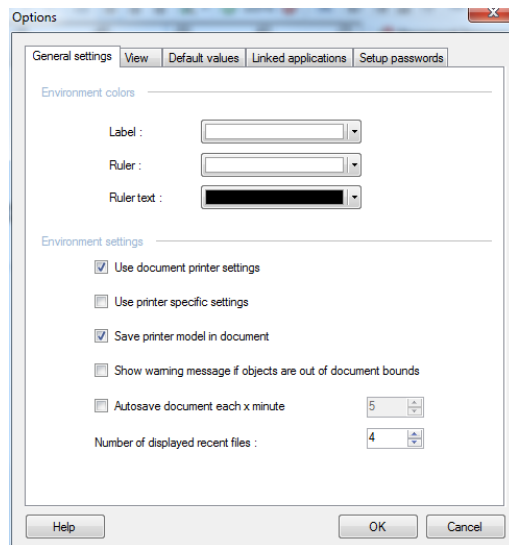
1. Create a new format with some fields:



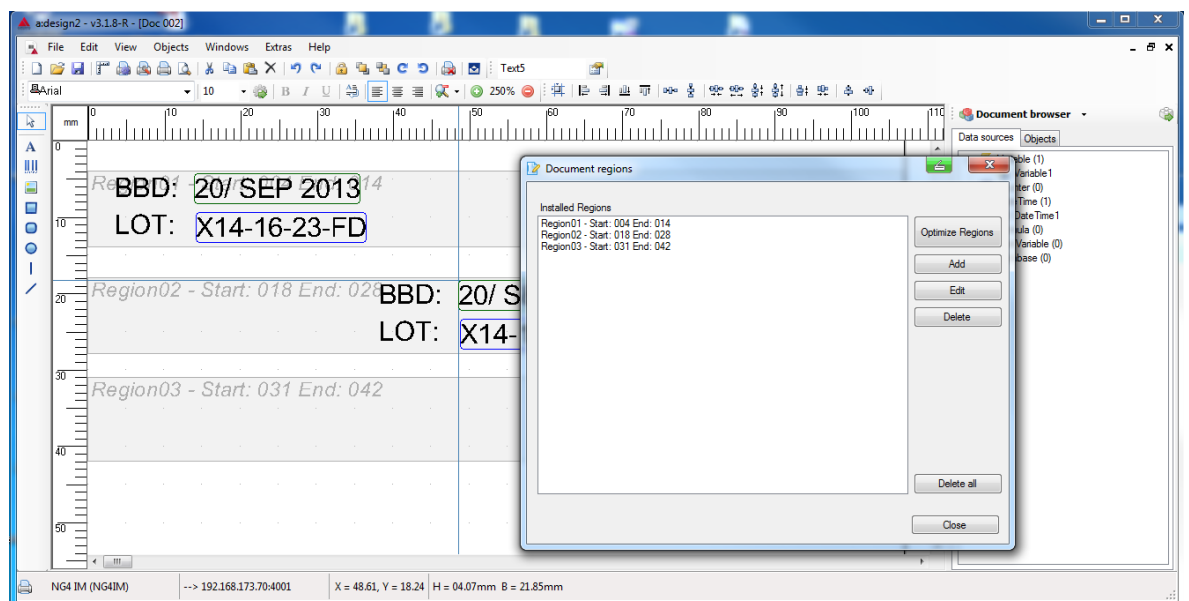
2. Select all the fields and copy the format with an offset below



3. Go to Extras→Options and verify „Use document printer settings“ is enabled



4. Go to Extras → Document regions and click “Optimize regions”



Alternatively, you can manually define the regions.

5. Transfer the format to the printer. (Go to File → Print).
Now the printer prints at each trigger one of the defined region before a ribbon advance occurs.