

a:design2
Database functionality



Allen Coding GmbH
Friedrich-Bergius-Ring 30
97076 Würzburg
Germany

Phone: +49 (0) 931-25076-0
FAX: +49 (0) 931 25076-50

E-Mail: support@allencoding.com
Web: www.allencoding.com

a:design2

Table of contents

SYSTEM REQUIREMENTS3

ODBC DATA SOURCES4

ADD KEY FIELD5

ASSIGN DATA SOURCES5

SELECT THE FIELDS YOU WANT TO USE IN THE FORMAT6

System requirements

PC-Hardware	Requirements
Installed a:design2	
Software	Windows 7 SP1 Windows XP embedded (Service Pack 3) Windows 10 Microsoft .NET Framework 4.0

It's absolutely possible that the software is running without problems on differing system constellations. The performance of the application will possibly slow down with older hardware. Most important for a faultless application execution is enough free working memory and hard disk space.

NGT System

Printer-Hardware	Requirements
Printer model	NG2, NG2+, NG4, NG4+, NG6, NG6E, NG8, NG8E
Firmware	Current printer firmware
Connectivity	Ethernet / Serial

53 System

Printer-Hardware	Requirements
Printer model	53XL40, 53XL80u, 53XLC, XL5000, XL5000C
Firmware	Current printer firmware
Connectivity	Ethernet / Serial

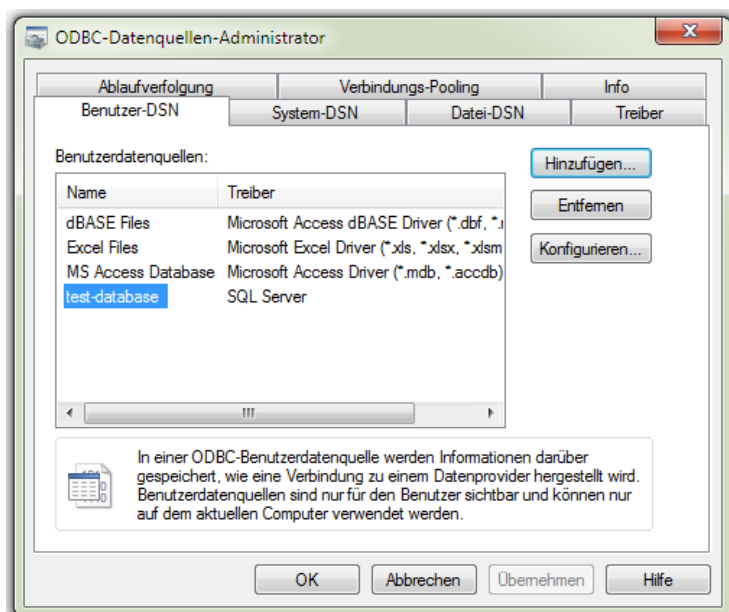
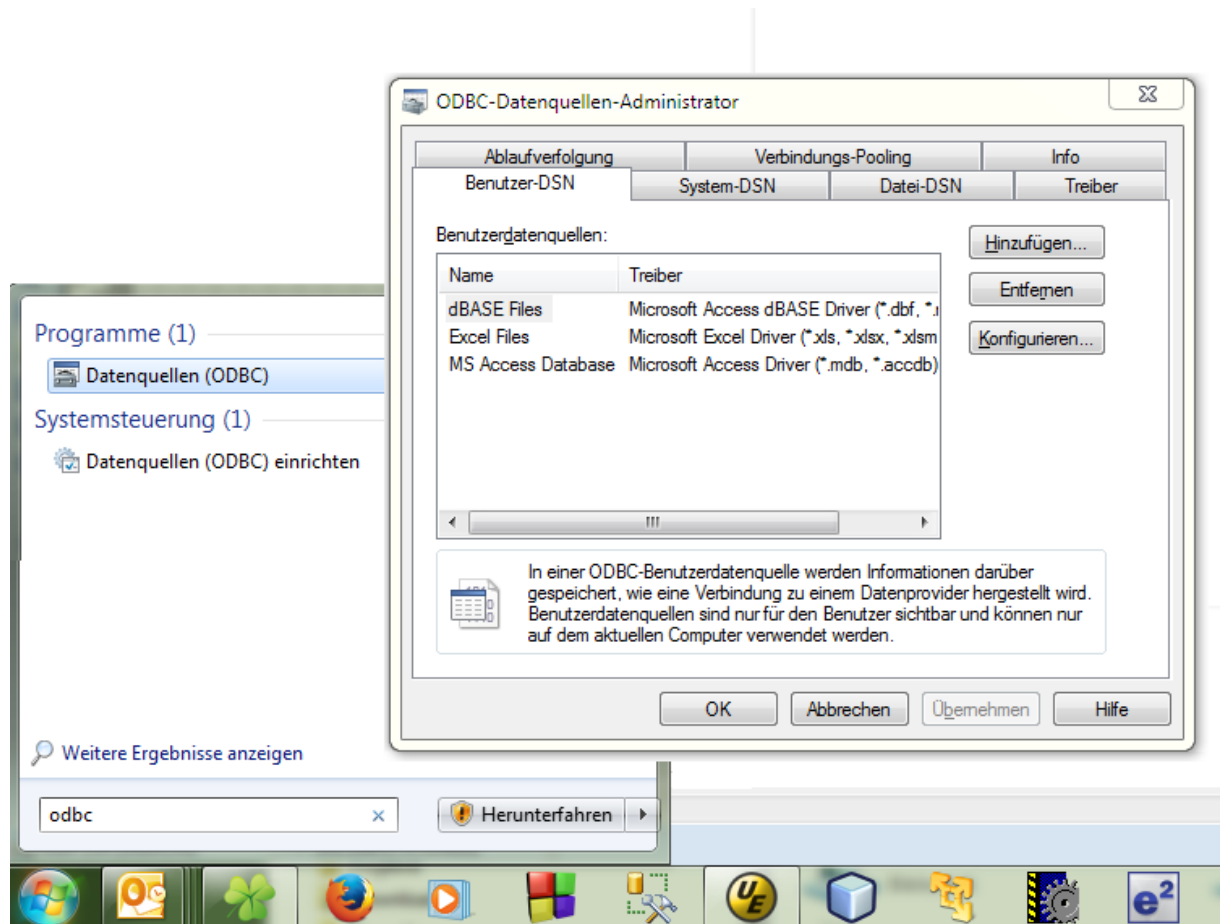
MLi System

Printer-Hardware	Requirements
Printer model	MLi
Firmware	Current printer firmware
Connectivity	Ethernet / Serial

ODBC data sources

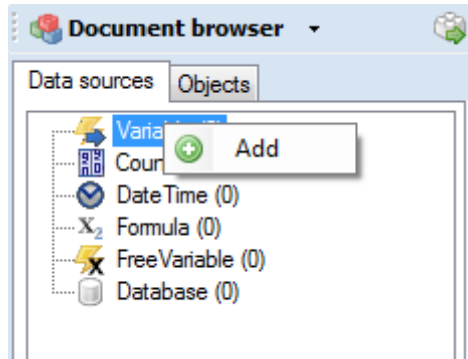
Type "ODBC" in the start menu and add a User-DSN connection to your database.

(If you want to connect to a MySQL-Database for example, a ODBC datadriver for MySQL has to be installed first)

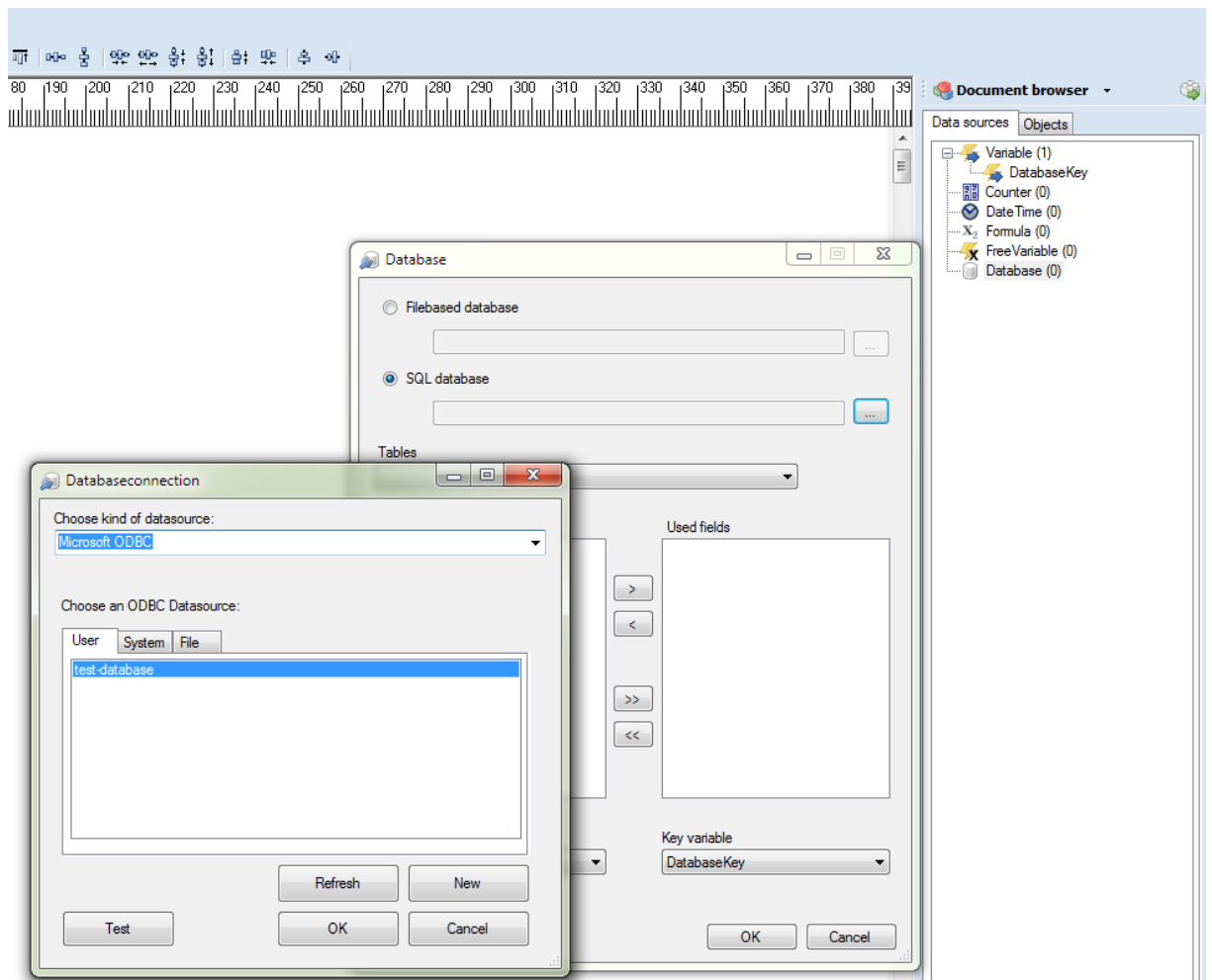


Add Key field

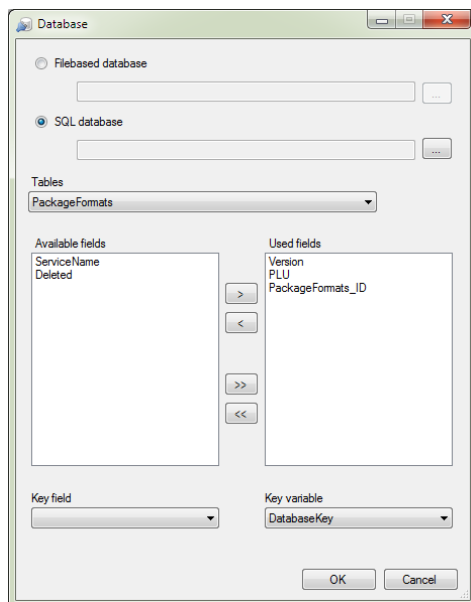
Add a Key Field for the database row in the document browser



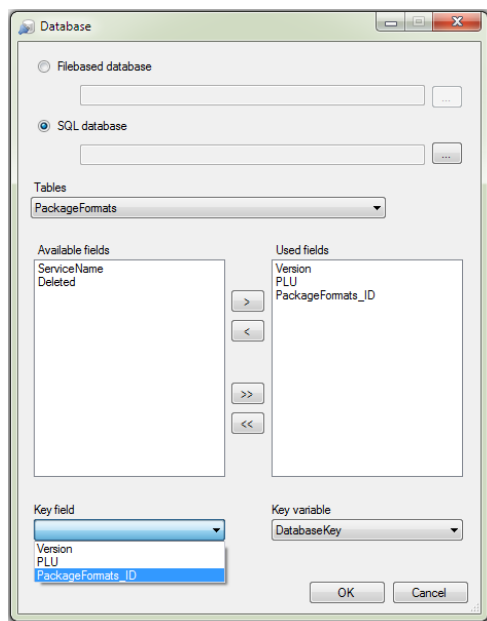
Assign data sources



Select the fields you want to use in the format



Assign the Key variable to the Key field



Dragdrop the fields into the screen and create a Text field or a barcode field.

Then change the database key .The dropped fields will refresh with the corresponding data of the database line

