

## **a:design2** **Installation notes**



**Allen Coding GmbH**  
Friedrich-Bergius-Ring 30  
97076 Würzburg  
Germany

TEL: +49 (0) 931-25076-0  
FAX: +49 (0) 931 25076-50

E-Mail: [support@allencoding.com](mailto:support@allencoding.com)  
Web: [www.allencoding.com](http://www.allencoding.com)

# Installationshinweise

## a:design2

### Inhaltsverzeichnis

1. SYSTEM REQUIREMENTS .....	3
2. INSTALLATION .....	4
• Installation on a PC: .....	4
3. LANGUAGE .....	4
4. LICENSING .....	5FEHLER! TEXTMARKE NICHT DEFINIERT.
5. CREATION OF NEW PRINTERS .....	6

**Note:**

All screenshots of the application which are shown in this document are to be taken as examples and are subjected to the copyright of Allen Coding GmbH.

## 1. System requirements

PC-Hardware	Requirements
Processor	Min. CPU 1.0 GHz
RAM	Minimum required to complete the installation: 1 GB  Recommended: 4 GB
HDD	150 MB for program installation + Space for printing formats
Mouse, Keyboard, Monitor or Touch-Screen Graphic card	ResolutionMonitor min. 800x600, 16 bit True color DirectX
Network card	Ethernet
RS232 / COM Ports	One COM-port for each serial connected printer
USB- Ports	USB for data exchange via USB-device
Software	Windows 10 -Microsoft Visual C++ 2010 Redistributable Package (x86)Microsoft - .NET Framework 4.6

It's absolutely possible that the software is running without problems on differing system constellations. The performance of the application will possibly slow down with older hardware. Most important for a faultless application execution is enough free working memory and hard disk space.

printer-Hardware	Requirements
Printer type	<b>NGT-Series:</b> NGT2, NGT2+, NGT4, NGT4+, NGT6, NGT6E, NGT8, NGT8E  <b>53LT/XL-Series:</b> 53LTi, 53LTc, 53XL80, 53XL40, 53XL80u, 53XLC, 25XLi, XL5000, XL5000C  <b>MLi Series:</b> MLi
Firmware	<b>NGT-Series:</b> Aktuellste Druckerfirmware ab Version N.5.x  <b>53LT/XL-Series:</b> Current firmmware  Depending on the firmware version not all application functions will be supported
Connectivity	Seriell, Ethernet or USB (53XL only)

## 2. Installation

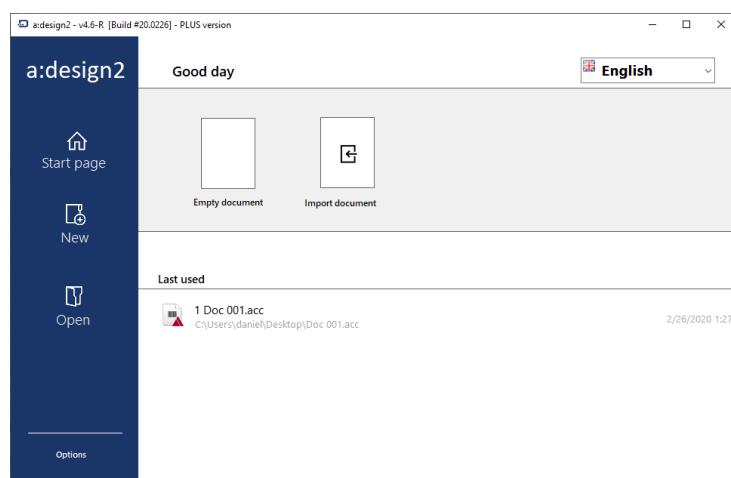
- **Installation on a PC:**

Run the setup and follow the instructions of the setup-wizard. Standard path for the application:

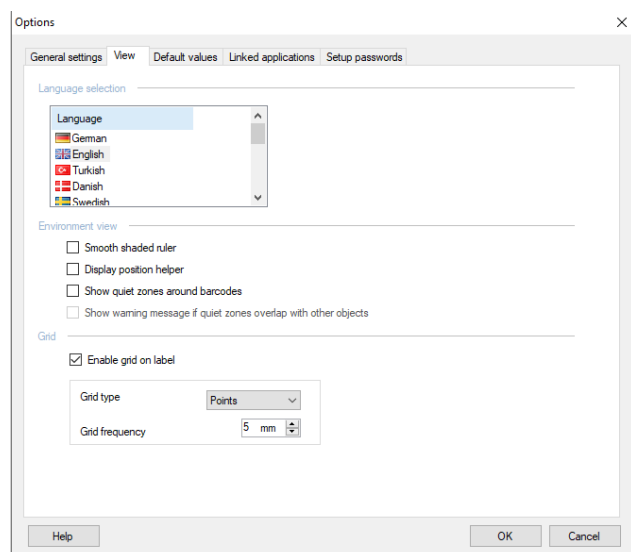
„C:\Programme (x86)\Allen Coding\adesign2“

## 3. Language

a:design2 is available in multiple languages. The program language can be changed on the start screen:

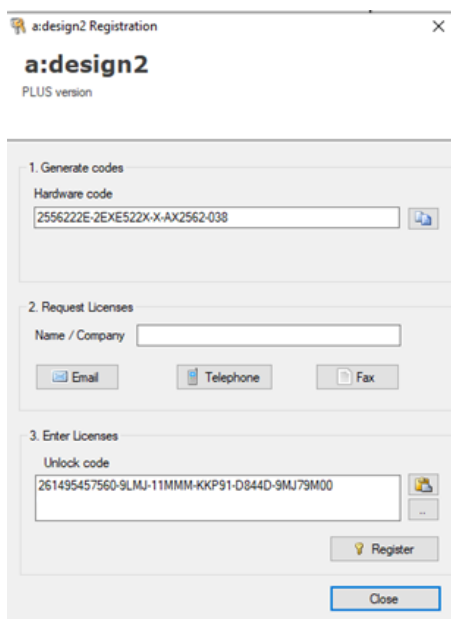
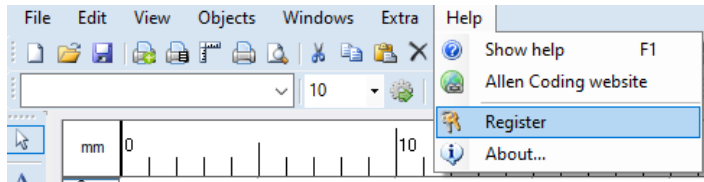


To change the language got to **Extras – Options**. In the pop-up window select the flag “View” and select then your preferred language. Confirm with “OK” and restart the application



## 4. Licensing

By default, a: design runs in the **Basic version**. In this mode, advanced functions such as formulas, wizards or the use of designers or several worksheets are missing. In order to activate the **Plus version**, a: design2 must be registered for a fee:



**a:design2**  
PLUS version

1. Generate codes  
Hardware code  
2556222E-2EXE522X-X-AX2562-038

2. Request Licenses  
Name / Company  
Email Telephone Fax

3. Enter Licenses  
Unlock code  
261495457560-9LMJ-11MMM-KKP91-D844D-9MJ79M00  
Register  
Close

The easiest way to register is by **Email**.

Fill in your name / company to register and select the number of printer licenses before generating an e-mail using the button „Email“




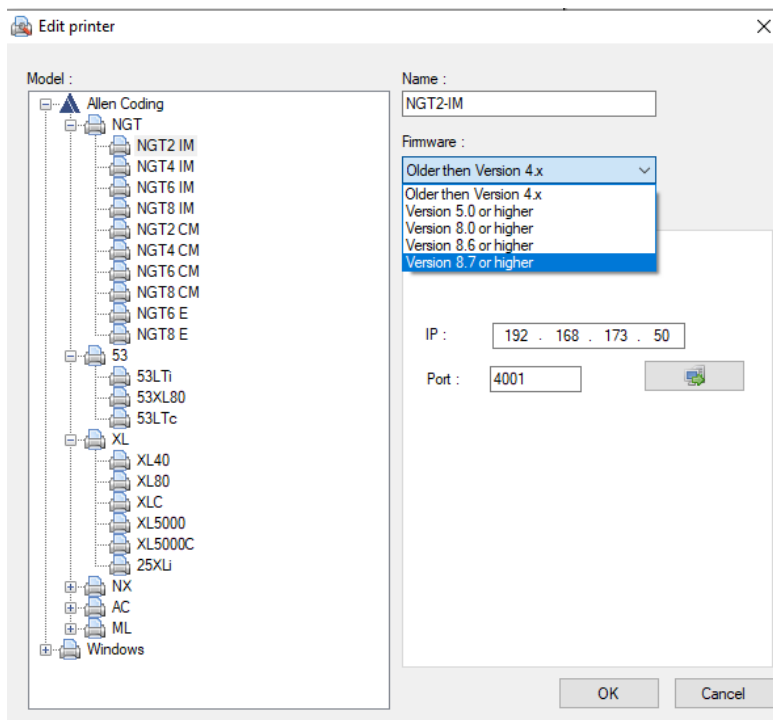
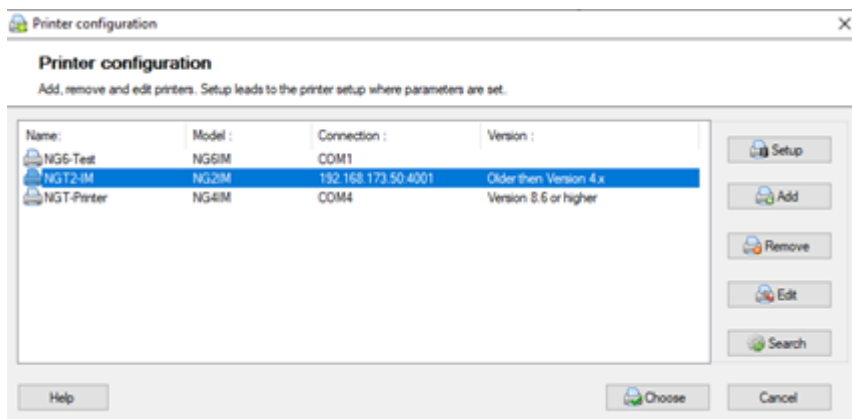
Senden An: support@allencoding.com Cc: Betreff: a:design2 Registration

a:design2 Registration  
Name: Allen Coding Test  
Hardware Key: 2556222E-2EXE522X-X-AX2562-038  
Address:  
Support:  
Allen Coding  
Friedrich-Bergius-Ring 30  
97076 Würzburg  
Deutschland  
Tel: +49 931 25076-0  
Fax: +49 931 25076-50  
E-Mail: support@allencoding.com

Once you have received the activation key, you can copy it into the activation key field and complete the registration for the full version with the "**Register**" button. Then a: design2 has to be restarted.

## 5. Creation of new printers

- Select  **File -> Printer Setup** from the menu bar. Create your printer (s) with the "**Add**" button.



### NGT-Series:

Baudrate 115200  
Parity None  
Data bits 8  
Stop bits 1  
Flow control Hardware

### XL-Series, MLI

Baudrate 115200  
Parity None  
Data bits 8  
Stop bits 1  
Flow control Keine

# Installation Notes

a:design2



In order to connect to the printer via the Ethernet interface, enter the IP address assigned to the printer. The port always has the number 4001 on the NGT series. The number 30001 on the MLi / XL series

